

NOTA BENE

pro jazzový kvintet

SCORE

Karel Velebný

Medium fast ♩ = 160 A

VIBRAPHONE

ELECTRIC GUITAR

PIANO

STRING BASS

DRUM SET

VIB.

E.GTR.

PNO.

Bs.

D. S.

NOTA BENE
pro jazzový kvintet

2

VIB. 9

E.GTR. 9

PNO. 9

Bs. 9

D.S. 9

$A^b mi^7 D^b13$ $D ma^7$ $G 7(\#11)$ $E^b mi^{11}$ A^b13

VIB. 14

E.GTR. 14

PNO. 14

Bs. 14

D.S. 14

H.H. CYM.

1. 2. B

$A^b13(b9)$ $D^b ma^7$ $C ma^{13(\#11)}$

VIB. 19

E.GTR. 19

PNO. 19

Bs. 19

D. S. 19

$D^b ma^7$ $D ma^7$ $G^b ma^7$

VIB. 25

E.GTR. 25

PNO. 25

Bs. 25

D. S. 25

$A^{13}(\#11)$ $D^{13}(\#11)$ $E^b7(\#9) A^{13}$

NOTA BENE
pro jazzový kvintet

4 C $D^{\circ 7}$ $G^{7(b9)}$ Ama^7

VIB. 31

E.GTR. 31

PNO. 31

Bs. 31

D. S. 31

$A mi^7/D$ $C\# mi^7$ $F\#13$ $G ma^7$ $C^{7(\#11)}$ $A^b mi^7$ D^b13 $D ma^7$

VIB. 37

E.GTR. 37


PNO. 37

Bs. 37


D. S. 37

NOTA BENE
pro jazzový kvintet


6 $E^{\flat}7(\#9)$ A^{13} $A^{\flat}13(\flat9)$ $D^{\flat}ma^7$ **E**

VIB. 


61 $E^{\flat}7(\#9)$ A^{13} $A^{\flat}13(\flat9)$ $D^{\flat}ma^7$

E.GTR. 


61 $E^{\flat}7(\#9)$ A^{13} $A^{\flat}13(\flat9)$ $D^{\flat}ma^7$ $D^{\circ}7$

PNO. 

61 $E^{\flat}7(\#9)$ A^{13} $A^{\flat}13(\flat9)$ $D^{\flat}ma^7$ ARCO

Bs. 

61

D. S. 

61

VIB. 

67

E.GTR. 

67

PNO. G^7 Ama^7 Ami^7/D $C^{\sharp}mi^7$ 

67

Bs. 

67

D. S. 

67

NOTA BENE
pro jazzový kvintet

VIB. 71

E.GTR. 71

PNO. 71

Bs. 71

D. S. 71

F#7 G ma7 C 7(#11) A^bmi7

VIB. 75

E.GTR. 75

PNO. 75

Bs. 75

D. S. 75

D^b7 D ma7 G E^bmi7

NOTA BENE
pro jazzový kvintet

F

8

VIB.
79

E.GTR.
79

PNO.
79

Bs.
79

D. S.
79

A^{b13} $D^b ma^7$ $D^{\circ 7}$

79

VIB.
83

E.GTR.
83

PNO.
83

Bs.
83

D. S.
83

G^7 $A ma^7$ $A mi^7 / D$ $C^{\#} mi^7$

83

VIB. 87

E.GTR. 87

PNO. 87

Bs. 87

D. S. 87

F#7 G C7(#11) A^bmi⁷

VIB. 91

E.GTR. 91

PNO. 91

Bs. 91

D. S. 91

D^b7 Dma⁷ G⁷ E^bmi⁷

NOTA BENE
pro jazzový kvintet

G

10

VIB. 95

E.GTR. 95

PNO. 95

Bs. 95

D. S. 95

H.H.

CYM.

$A^{\flat 13}$ $D^{\flat}ma^7$ $Cma^9(\#11)$

VIB. 100

E.GTR. 100

PNO. 100

Bs. 100

D. S. 100

$D^{\flat}ma^7$ Dma^7 $G^{\flat}ma^7$

VIB. 105

E.GTR. 105

PNO. 105

Chords: $A^{13(\#11)}$ $D^{13(\#11)}$

Bs. 105

D. S. 105

VIB. 110

E.GTR. 110

PNO. 110

Bs. 110


D. S. 110


Chords: $E^b7(\#9)$ A^{13} $A^b13(b9)$ D^bma^7 $D^{\circ7}$ $G^{7(b9)}$


Drum notation: $D^{\circ7}$ $G^{7(b9)}$ $D^{\circ7}$ $G^{7(b9)}$ $D^{\circ7}$ PIZZ. $G^{7(b9)}$


NOTA BENE
pro jazzový kvintet


12 **A**ma⁷ **A**mi⁷/**D** **C**[#]mi⁷ **F**[#]13 **G**ma⁷ **C**⁷([#]11) **A**^bmi⁷ **D**^b13

VIB.  116


E.GTR.  116


PNO.  116


Bs.  116


D. S.  116

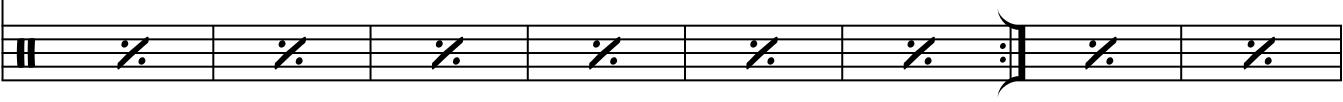
Dma⁷ **G**⁷([#]11) **E**^bmi¹¹ **A**^b13 **A**^b13(^b9) **D**^bma⁷ **I** **C**ma¹³([#]11)

VIB.  124

E.GTR.  124

PNO.  124

Bs.  124

D. S.  124

NOTA BENE
pro jazzový kvintet

D^bma⁷

Dma⁷

G^bma⁷

A¹³(#11)

13

VIB. 132

E.GTR. 132

PNO. 132

BS. 132

D. S. 132

132

D¹³(#11)

E^b7(#9) A¹³ A^b13(b9) D^bma⁷

VIB. 140

E.GTR. 140

PNO. 140

BS. 140

D. S. 140

140

NOTA BENE
pro jazzový kvintet

14

VIB. 147

E.GTR. 147

PNO. 147

Bs. 147

D. S. 147

147

VIB. 151

E.GTR. 151

PNO. 151

Bs. 151

D. S. 151

J

151

NOTA BENE
pro jazzový kvintet

15

VIB. 155

E.GTR. 155

PNO. 155

Bs. 155

D. S. 155

VIB. 159

E.GTR. 159

PNO. 159

Bs. 159

D. S. 159

(K) D^ø7 AD LIB.

D^ø7 AD LIB.

NOTA BENE
pro jazzový kvintet

16 **G⁷** **Ama⁷** **A^{mi}⁷/D** **C[#]mi⁷**

VIB.  163

E.GTR.  163

PNO.  163

Bs.  163

D. S.  163

F[#]7 **G** **C⁷([#]11)** **A^bmi⁷**

VIB.  167

E.GTR.  167

PNO.  167

Bs.  167

D. S.  167

NOTA BENE
pro jazzový kvintet

17

VIB. $D^{\flat 7}$ $D^{\flat ma^7}$ G^7 $E^{\flat mi^7}$

E.GTR. $D^{\flat 7}$ $D^{\flat ma^7}$ G^7 $E^{\flat mi^7}$

PNO.

Bs.

D. S.

171

VIB. $A^{\flat 13}$ $D^{\flat ma^7}$ **L**

E.GTR. $A^{\flat 13}$ $D^{\flat ma^7}$

PNO. $C^{\flat ma^9(\#11)}$

Bs. **ARCO**

D. S. **H.H.** **CYM.**

175

NOTA BENE
pro jazzový kvintet

18

VIB.

E.GTR.

PNO.

Bs.

D. S.

180

$D^b ma^7$ $D ma^7$ $G^b ma^7$

VIB.

E.GTR.

PNO.

Bs.

D. S.

185

$A^{13}(\#11)$ $D^{13}(\#11)$

VIB. 190

E.GTR. 190

PNO. 190

Bs. 190

D. S. 190

$E^b7(\#9)$ A^{13} A^b7 $A^b13(b9)$ D^bma^7 $A^b13(b9)$ D^bma^7

H.H. CYM. H.H.

VIB. 195

E.GTR. 195

PNO. 195

Bs. 195

D. S. 195

$A^b13(b9)$ $D^bma^7(\#11)$ $C\#mi^9$

CYM.

NOTA BENE

pro jazzový kvintet

Medium fast ♩ = 160

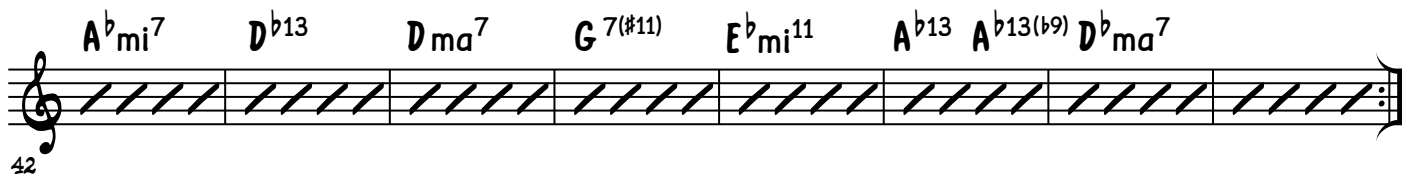
A



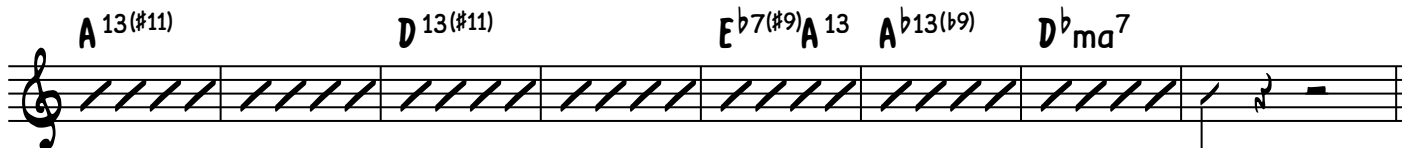
B



C



D



NOTA BENE
pro jazzový kvintet

E

2



72

F



78



84



90

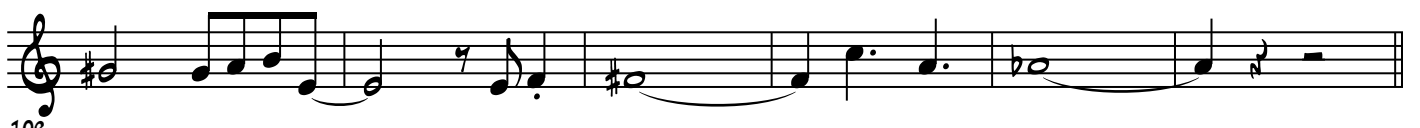
G



96



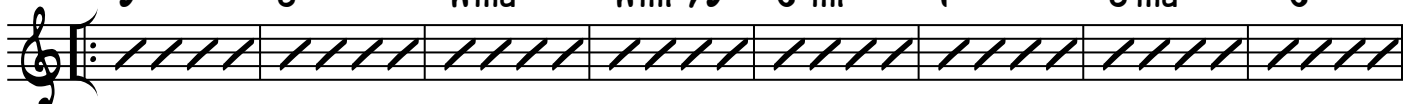
102



108

H

D^ø7 G^{7(b9)} A^{ma}7 A^{mi}7/D C^{#mi}7 F^{#13} G^{ma}7 C^{7(#11)}



NOTA BENE
pro jazzový kvintet

122

$A^b mi^7$ D^b13 $D ma^7$ $G^7(\#11)$ $E^b mi^{11}$ A^b13 $A^b13(b9)$ $D^b ma^7$ 3

I

$C ma^{13(\#11)}$ $D^b ma^7$ $D ma^7$ $G^b ma^7$

138

$A^{13(\#11)}$ $D^{13(\#11)}$ $E^b7(\#9)$ A^{13} $A^b13(b9)$ $D^b ma^7$

146

J

K

AD LIB.

$D^{\circ}7$ G^7 $A ma^7$ $A mi^7/D$ $C^{\#} mi^7$ $F^{\#}7$ G $C^7(\#11)$

170

$A^b mi^7$ D^b7 $D ma^7$ G^7 $E^b mi^7$ A^b13 $D^b ma^7$

L

186

192

NOTA BENE pro jazzový kvintet

Medium fast ♩ = 160

A

Musical staff for section A, measures 1-5. The staff contains a melodic line starting with a quarter rest, followed by eighth and quarter notes.

Musical staff for section A, measures 6-11. Measures 6 and 7 feature triplet markings over eighth notes.

Musical staff for section A, measures 12-15. Measures 14 and 15 include first and second endings.

B

Musical staff for section B, measures 16-25. The staff contains a melodic line with various intervals and rests.

Musical staff for section B, measures 26-35. The staff contains a melodic line with various intervals and rests.

C

Chord progression for section C, measures 36-41. The chords are: $D^{\circ 7}$, $G^{7(b9)}$, Ama^7 , Ami^7/D , $C^{\#}mi^7$, $F^{\#13}$, Gma^7 , $C^{7(\#11)}$.

Chord progression for section C, measures 42-47. The chords are: A^bmi^7 , D^b13 , Dma^7 , $G^{7(\#11)}$, E^bmi^{11} , A^b13 , $A^b13(b9)$, D^bma^7 .

D

Chord progression for section D, measures 48-53. The chords are: $Cma^{13(\#11)}$, D^bma^7 , Dma^7 , G^bma^7 .

Chord progression for section D, measures 54-57. The chords are: $A^{13(\#11)}$, $D^{13(\#11)}$, $E^b7(\#9)$, A^{13} , $A^b13(b9)$, D^bma^7 .

58

NOTA BENE
pro jazzový kvintet

E

F

G

H

D^ø7 G^{7(b9)} A^{ma}7 A^{mi}7/D C^{#mi}7 F^{#13} G^{ma}7 C^{7(#11)}

NOTA BENE
pro jazzový kvintet

$A^b mi^7$ D^b13 $D ma^7$ $G^7(\#11)$ $E^b mi^{11}$ A^b13 $A^b13(b9)$ $D^b ma^7$ 3

122

I $C ma^{13(\#11)}$ $D^b ma^7$ $D ma^7$ $G^b ma^7$

138

$A^{13(\#11)}$ $D^{13(\#11)}$ $E^b7(\#9)$ A^{13} $A^b13(b9)$ $D^b ma^7$

146

146

J

170

K AD LIB.
 $D^{\circ7}$ G^7 $A ma^7$ $A mi^7/D$ $C^{\#} mi^7$ $F^{\#7}$ G $C^7(\#11)$

170

$A^b mi^7$ D^b7 $D ma^7$ G^7 $E^b mi^7$ A^b13 $D^b ma^7$

186

L

192

192

$C^{\#} mi^9$

192

NOTA BENE

pro jazzový kvintet

PIANO

Karel Velebný

Medium fast $\text{♩} = 160$

A $D^{\circ 7}$ $G^{7(b9)}$ Ama^7 Ami^7/D $C\#mi^7$ $F\#13$

6 Gma^7 $C^{7(\#11)}$ A^bmi^7 D^b13 Dma^7 $G^{7(\#11)}$

12 E^bmi^{11} A^b13 $A^b13(b9)$ D^bma^7 1. 2.

B $Cma^{13(\#11)}$ D^bma^7 Dma^7 G^bma^7

26 $A^{13(\#11)}$ $D^{13(\#11)}$ $E^b7(\#9)$ A^{13} $A^b13(b9)$ D^bma^7

C $D^{\circ 7}$ $G^{7(b9)}$ Ama^7 Ami^7/D $C\#mi^7$ $F\#13$ Gma^7 $C^{7(\#11)}$

42 A^bmi^7 D^b13 Dma^7 $G^{7(\#11)}$ E^bmi^{11} A^b13 $A^b13(b9)$ D^bma^7

D $Cma^{13(\#11)}$ D^bma^7 Dma^7 G^bma^7

58 $A^{13(\#11)}$ $D^{13(\#11)}$ $E^b7(\#9)$ A^{13} $A^b13(b9)$ D^bma^7

NOTA BENE
pro jazzový kvintet

E $D^{\circ 7}$ G^7 Ama^7 Ami^7/D $C\#mi^7$ $F\#7$ 2

Gma^7 $C^{7(\#11)}$ A^bmi^7 D^b7 Dma^7 G

E^bmi^7 A^b13 D^bma^7 **F** $D^{\circ 7}$ G^7

Ama^7 Ami^7/D $C\#mi^7$ $F\#7$ G $C^{7(\#11)}$

A^bmi^7 D^b7 Dma^7 G^7 E^bmi^7 A^b13

D^bma^7 **G** $Cma^9(\#11)$ D^bma^7

Dma^7 G^bma^7 $A^{13(\#11)}$

$D^{13(\#11)}$ $E^b7(\#9)$ A^{13} $A^b13(b9)$ D^bma^7

H $D^{\circ 7}$ $G^{7(b9)}$ Ama^7 Ami^7/D $C\#mi^7$ $F\#13$ Gma^7 $C^{7(\#11)}$

A^bmi^7 D^b13 Dma^7 $G^{7(\#11)}$ E^bmi^{11} A^b13 $A^b13(b9)$ D^bma^7

I $Cma^{13(\#11)}$ D^bma^7 Dma^7 G^bma^7

NOTA BENE
pro jazzový kvintet

A 13(#11) D 13(#11) E^b7(#9) A 13 A^b13(b9) D^bma⁷ 3



138



146

J



152

K



158



164



170

L Cma⁹(#11) D^bma⁷ Dma⁷



176

G^bma⁷ A 13(#11) D 13(#11) E^b7(#9) A 13 A^b7 A^b13(b9)



184

D^bma⁷ A^b13(b9) D^bma⁷ A^b13(b9) D^bma⁷(#11) C[#]mi⁹



192

NOTA BENE

pro jazzový kvintet

STRING BASS

Karel Velebný

Medium fast ♩ = 160

A



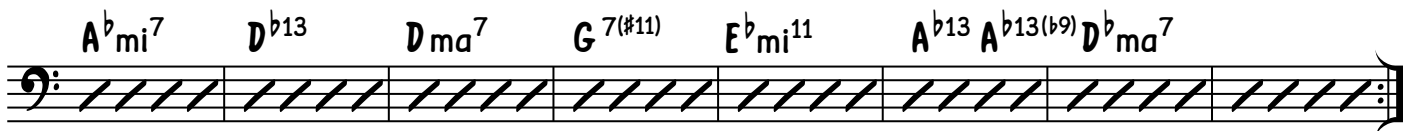
12

B



26

C



42

D



58

NOTA BENE
pro jazzový kvintet

E ARCO

2

72

78

84

90

G

96

102

108

H PIZZ.

114

122

I

$D^{\flat 7}$ $G^{7(b9)}$ Ama^7 Ami^7/D $C^{\#}mi^7$ $F^{\#13}$ Gma^7 $C^{7(\#11)}$

$A^{\flat}mi^7$ $D^{\flat 13}$ Dma^7 $G^{7(\#11)}$ $E^{\flat}mi^{11}$ $A^{\flat 13}$ $A^{\flat 13(b9)}$ $D^{\flat}ma^7$

$Cma^{13(\#11)}$ $D^{\flat}ma^7$ Dma^7 $G^{\flat}ma^7$

NOTA BENE
pro jazzový kvintet

A 13(#11)

D 13(#11)

E b7(#9)

A 13 A b13(b9)

D b ma7

3



138

PIZZ.



146

J



152

K



158



164

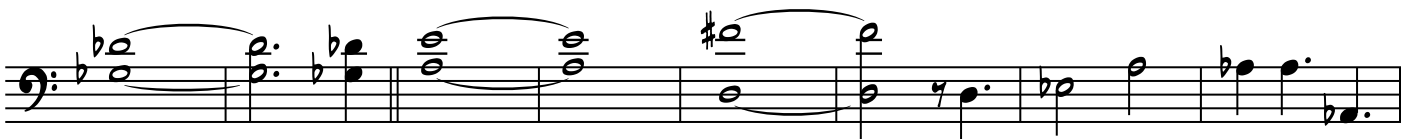


170

L ARCO



176



184



192

NOTA BENE pro jazzový kvintet

Medium fast ♩ = 160

A

6

12

H.H.

1.

2.

B CYM.

8

16

26

C

8

16

42

D

8

58

NOTA BENE
pro jazzový kvintet

E

7

2

Musical staff with notes and accents. The staff contains a sequence of notes with accents (^) above them. There are also some rests and a double bar line.

F

Musical staff with notes and accents. The staff contains a sequence of notes with accents (^) above them. There are also some rests and a double bar line.

78

Musical staff with notes and accents. The staff contains a sequence of notes with accents (^) above them. There are also some rests and a double bar line.

84

Musical staff with notes and accents. The staff contains a sequence of notes with accents (^) above them. There are also some rests and a double bar line.

90

H.H.

G CYM.

Musical staff with notes and accents. The staff contains a sequence of notes with accents (^) above them. There are also some rests and a double bar line.

96

Musical staff with notes and accents. The staff contains a sequence of notes with accents (^) above them. There are also some rests and a double bar line.

102

Musical staff with notes and accents. The staff contains a sequence of notes with accents (^) above them. There are also some rests and a double bar line.

108

H

8

Musical staff with notes and accents. The staff contains a sequence of notes with accents (^) above them. There are also some rests and a double bar line.

16

Musical staff with notes and accents. The staff contains a sequence of notes with accents (^) above them. There are also some rests and a double bar line.

122

NOTA BENE
pro jazzový kvintet

I

Musical notation for section I, measures 138-145. The notation consists of a single staff with a treble clef and a key signature of one flat. Measures 138-144 contain a series of eighth notes, each marked with a slash and a colon (/:). Measure 145 contains a triplet of eighth notes, with the first note marked with a slash and a colon (/:) and the second note marked with a lambda symbol (λ). The number 16 is written above the triplet, and the number 8 is written above the final measure of the section.

H.H.

Musical notation for section I, measures 146-153. The notation consists of a single staff with a treble clef and a key signature of one flat. Measures 146-152 contain a series of eighth notes, each marked with a slash and a colon (/:). Measure 153 contains a triplet of eighth notes, each marked with a slash and a colon (/:). The number 8 is written above the final measure of the section.

J

Musical notation for section J, measures 154-161. The notation consists of a single staff with a treble clef and a key signature of one flat. Measures 154-160 contain a series of eighth notes, each marked with a slash and a colon (/:). Measure 161 contains a triplet of eighth notes, each marked with a slash and a colon (/:). The number 8 is written above the final measure of the section.

K

Musical notation for section K, measures 162-170. The notation consists of a single staff with a treble clef and a key signature of one flat. Measures 162-168 contain a series of eighth notes, each marked with a slash and a colon (/:). Measure 169 contains a triplet of eighth notes, each marked with a plus sign (+) and a circle (o). Measure 170 contains a triplet of eighth notes, each marked with a plus sign (+) and a circle (o). The number 8 is written above the final measure of the section.

L

CYM.

Musical notation for section L, measures 171-194. The notation consists of a single staff with a treble clef and a key signature of one flat. Measures 171-175 contain eighth notes marked with a circled cross (⊗). Measures 176-180 contain eighth notes marked with a circled cross (⊗). Measure 181 contains a triplet of eighth notes, each marked with a plus sign (+) and a circle (o). Measure 182 contains a triplet of eighth notes, each marked with a plus sign (+) and a circle (o). Measures 183-184 contain eighth notes marked with a circled cross (⊗). Measure 185 contains a triplet of eighth notes, each marked with a plus sign (+) and a circle (o). Measure 186 contains a triplet of eighth notes, each marked with a plus sign (+) and a circle (o). Measures 187-190 contain eighth notes marked with a circled cross (⊗). Measure 191 contains a triplet of eighth notes, each marked with a plus sign (+) and a circle (o). Measure 192 contains a triplet of eighth notes, each marked with a plus sign (+) and a circle (o). Measures 193-194 contain eighth notes marked with a circled cross (⊗). The number 186 is written below the first measure of the section, and the number 194 is written below the final measure of the section.